



## Rockliffe® MailSite® SP

**MailSite SP is a secure, full featured Windows email server for service providers requiring a quality shared hosting platform for small business email.**

### **AN EMAIL PLATFORM BUILT FOR HOSTED SERVICE PROVIDERS**

MailSite SP has been designed from the ground up for hosted email service providers. An n+1 cluster of mail servers can be provisioned directly from a central Microsoft SQL user database, enabling full billing system integration. Services and policy management can be enabled or disabled at the server, domain or mailbox level, which keeps your costs down and your customer satisfaction up.

### **PROVISION WIRELESS EMAIL SERVICES IN MINUTES**

MailSite SP is more than just a secure SMTP, POP and IMAP and multi-language webmail email server. It comes bundled with wireless email services that can be deployed in minutes, without the need for complex client software, including SMS notifications about incoming messages.

### **ONE FLEXIBLE, LOW MAINTENANCE PLATFORM FOR LIFE**

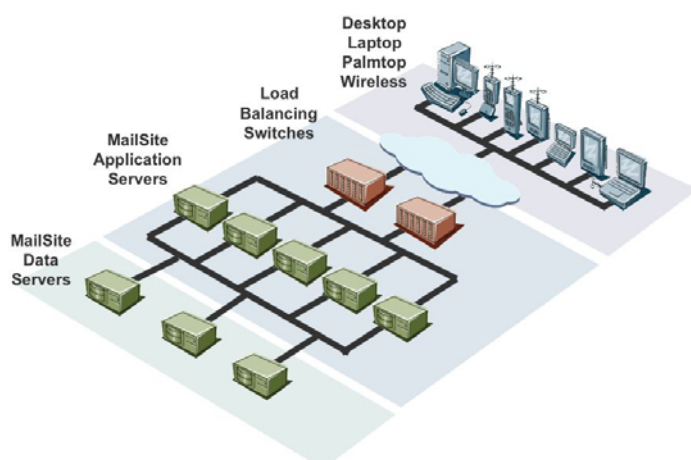
MailSite SP'S modular, distributed architecture scales across multiple, clustered application servers. Additional servers can be added at any time to meet a requirement for increased capacity. Servers can be clones or function-specific, and can be removed for maintenance at any time with zero service outage. Upgrades can be rolled out server by server to minimize risk and disruption. No other Windows platform provides this.

### **DIFFERENTIATE YOUR SERVICES**

MailSite SP is a top quality solution backed up by Rockliffe's 24 x7 support services to ensure that you deliver a customer experience that is second to none. MailSite's power & flexibility will help keep your services one step ahead of the competition.

### **SERVICE PROVIDER BENEFITS**

- Lower operational costs through automated provisioning & billing
- Bundled, high quality solution reduces costs & differentiates services from competitors
- Load-balanced, fault-tolerant architecture for maximum up-time
- Low cost, low risk rolling upgrades
- Out-of-the-box anti-spam & AV
- Flexible Sieve filtering covers all customer filtering requirements
- Mature technology proven since 1995
- Round-the-clock technical support





## Rockliffe® MailSite® SP

### FEATURE SUMMARY

- Seamless integration with SQL provisioning & billing systems
- Fault-tolerant, load-balanced architecture
- All-in-one high quality email server
- Low overhead, low risk rolling upgrades
- Out-of-the-box email security
- Full support for Outlook & major email clients
- Pre-integrated top quality virus scanner
- Pre-integrated top quality spam filter
- Built-in webmail, wireless email & list server
- Supports multiple, virtual domains
- 24 x 7 technical support

### REQUIREMENTS

#### Hardware

- Microsoft® Windows™ compatible hardware
- 512MB RAM minimum
- 100MB storage minimum

#### Software

- Windows 2000 Professional (SP4+), or;
- Windows 2000 Server (SP4+), or;
- Windows 2000 Advanced Server (SP4+), or;
- Windows Server 2003 Standard Edition, or;
- Windows Server 2003 Enterprise Edition
- Microsoft SQL Server 2000 (SP3+)

### ADMINISTRATION

- Local windows console
- Remote windows console
- Remote web console
- Context-sensitive help
- Multi-level logging
- Performance monitoring
- Log to windows event log
- Log to text file, ODBC database

### MAILSITE MP EMAIL GATEWAYS

MailSite MP Email Gateways provide inbound and outbound security for Microsoft Exchange or any SMTP server. Contact [sales@rockliffe.com](mailto:sales@rockliffe.com) for details.

### DETAILED FEATURE LIST

#### Email Clients

- Microsoft Outlook
- Microsoft Outlook Express
- Qualcomm Eudora
- Netscape Messenger, others
- Wireless email clients

#### Authentication

- Windows Registry
- Windows NT Login
- Active Directory
- ODBC Database

#### Webmail (MailSite Express)

- 19 languages (double-byte)
- Easy to brand & customize
- Calendar, tasks & notes
- Personal address book
- ASP & COM architecture

#### Wireless Device Integration

- Deploy in minutes
- Wireless push email
- SMS alerts
- MailSite Pocket WAP email
- Wireless client support

#### Content & Attachment Filtering

- Inbound & outbound
- Filter by size, attach. type
- Reject, Delete, Quarantine, Tag, Log, Archive...
- Include/Exclude by Server, Domain, Mailbox
- Enable at: Server, Domain, Mailbox levels

#### Corporate Policy Enforcement

- Apply disclaimers to outbound email
- Brand outbound emails
- Specify unacceptable content
- Monitor & log specific content
- Include/Exclude by Domain, Mailbox
- Configure at: Mailbox, Server & Domain levels

#### Sender Authentication

- Require reverse DNS
- Real Time Black List
- Validate From: domain

#### Attack Prevention & Security

- Secure Sockets Layer (SSL)
- Transport Layer Security (TLS)
- Denial-of-service attacks
- Dictionary harvest attacks
- Limit SMTP to local IP addresses
- Block specific hosts/IP addresses
- Block specific From: addresses

#### Advanced Anti-Virus Option

- Inbound & outbound
- Real-time, in-memory scanning
- Hourly update checks
- Automatic engine updates, no downtime
- No administrator intervention
- Supports multiple, virtual domains

#### Advanced Anti-Spam Option

- Heuristic analysis, Pattern matching, Spam definitions
- Protection against phishing
- Automated updates to block new types of spam
- Automated updates to spam engine
- White lists & Black lists
- Enable at: Server, Domain & Mailbox levels

#### Message Store

- Based on NTFS
- Compatible with Microsoft Windows 2000 or 2003 file server

#### Directories

- Support for LDAP3

#### Migration Tool

- Built in XML tool migrates users from any other mail server

#### List Server

- Unlimited membership
- Moderation via email & web
- Support for DIGEST
- Configurable messages
- Text or ODBC membership
- Web archive

#### Virtual Domains

- Send & receive for multiple domains
- Associate domains with IP addresses
- Domain level administration

#### Architecture & Programmability

- 32-bit Windows code
- Multi-processor, multi-threaded
- COM & C++ APIs
- Sieve content filter scripts
- Server & mailbox Agents
- Mail List Agents

#### Standards (RFCs)

- SMTP: 821, 1123, 1651, 1652, 1653, 1891, 1892, 1893, 1894, 1985, 2034
- POP3: 1725, 2095
- IMAP4: 2060, 2086, 2095, 2359
- LDAP3: 1558, 1779, 1778, 1798, 1823
- HTTP/HTML: 1867, 1942, 1980, 2557, 2616, 2659
- Others: 822, 1123



Worldwide  
Headquarters

Tel: +1-408-879-5600  
Fax: +1-408-879-5610  
[www.rockliffe.com](http://www.rockliffe.com)

European  
Headquarters

[europe@rockliffe.com](mailto:europe@rockliffe.com)  
Tel: +44 (0) 113 383 0125  
Fax: +44 (0) 113 383 0126